

CYMP Pressure Sensor

CYAP Absolute Pressure Sensor

Introduction

- Excellent EMC performance
- Comply with RoHs and CE standards
- Tested by salt mist, temperature and humidity
- Full-sealing waterproof characteristic
- Ingress Protection: IP65/IP67
- Modbus communication

Application

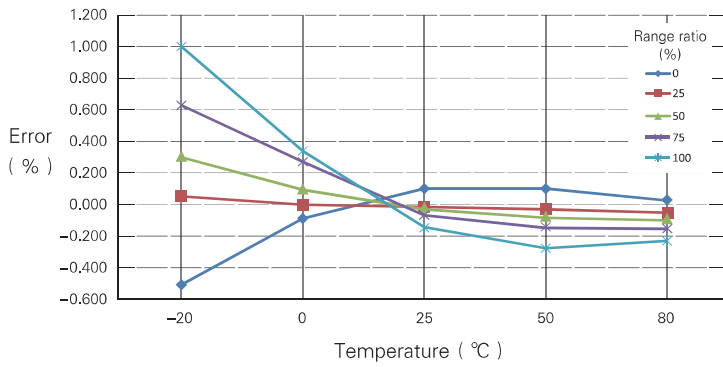
- Supply water system with constant pressure
- Automatic control
- Water treatment system
- Engineering machine
- Fermentation cylinder
- Process measurement



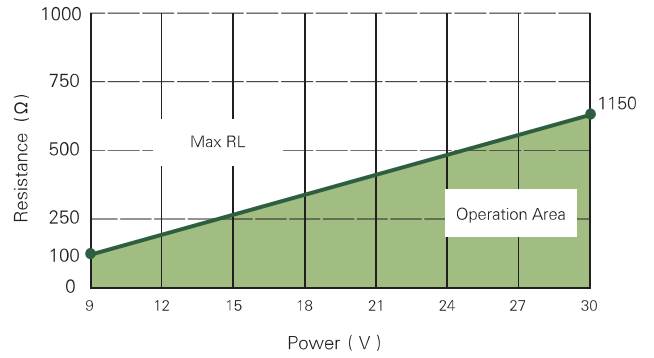
Technical Parameter

Specifications	Technical Data
Input data	
Measuring ranges	0 ~ 100KPa...70MPa
Overload pressures	150%F.S
Burst pressures	300%F.S
Operating voltage	4~20mA / 0~5V / 0.5~4.5V / 1~5V (9~30VDC) 0 ~ 10V (12~30VDC) Modbus (5VDC)
Output data	
Output signal	2-wire: 4 ~ 20mA 3-wire: 0.5 ~ 4.5V / 1 ~ 5V / 0 ~ 5V / 0 ~ 10V 4-wire: Modbus
Accuracy	0.25 % or 0.1 %
Response time	≤10ms
Long-term drift	≤ ± 0.1 % F.S typ. / year
Environmental condition	
Operating temperature range	-20 ~ +80°C
Storage temperature range	-30 ~ +85°C
EMC performance	EN 61000 – 6 – 2 / 3 / 4 / 6
Vibration	10g, 20Hz~2kHz (IEC 60068-2-6)
Shock	50g, 11ms (IEC 60068-2-27)
Free fall	1m (IEC 60068-2-32)
Insulation resistance	>100 MΩ (100 VDC)
Dielectric strength	AC1000V / 2mA (1min)
Sensor Material	Connection : Stainless steel 1.4301 Sensor Diaphragm : 316L Housing : SUS304

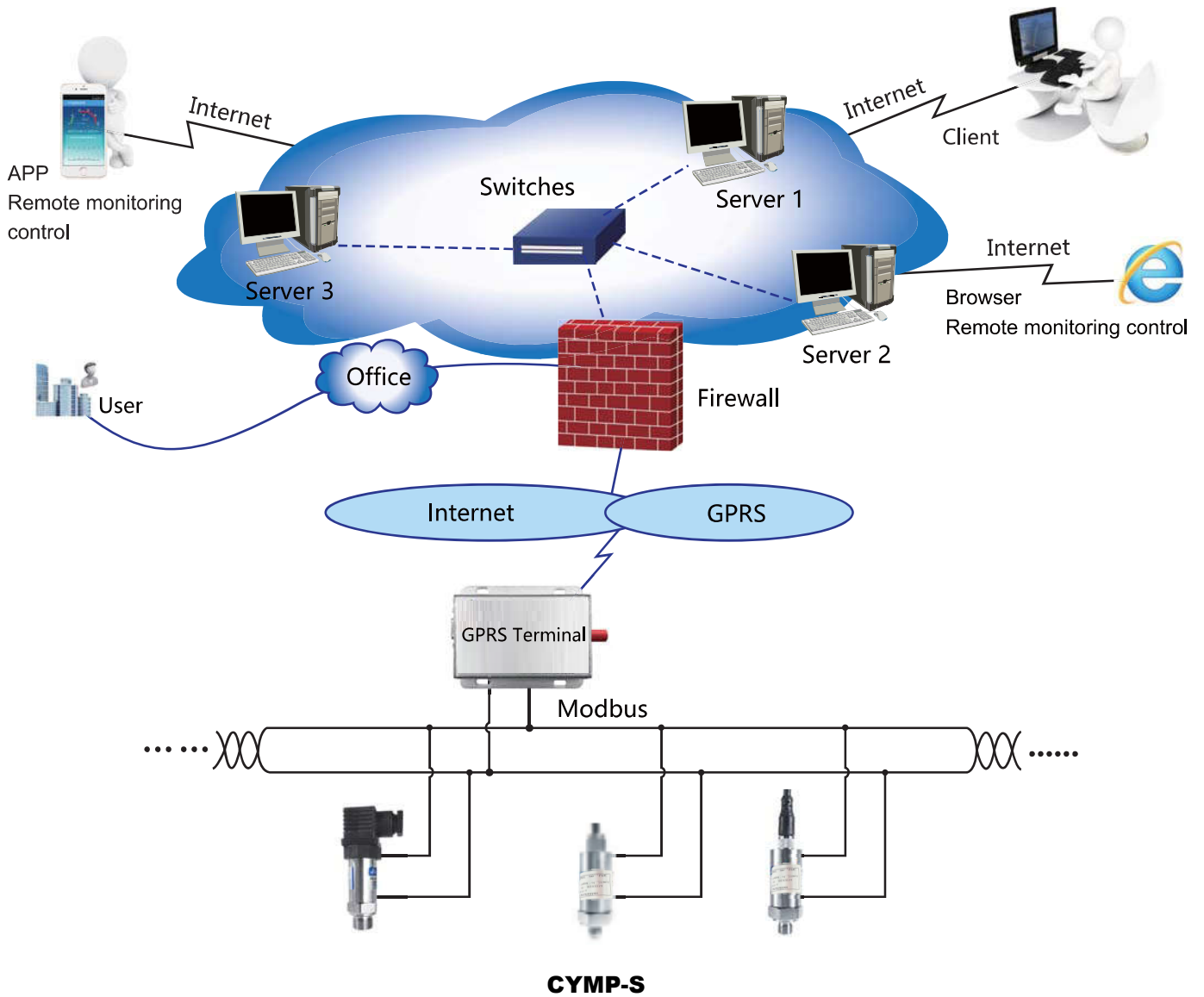
Temperature Performance



4~20mA Load Characteristic



The Application of Process Monitor



Appendix table A for Dimension

Appendix table B for Electrical port

Type Code

CY - - - -

Code1	Reference
MP	Pressure
AP	Absolute Pressure

Code2	Output
A	4~20mA
V0	0~10V
V1	0~5V
V2	1~5V
V3	0.5~4.5V
S	Modbus

Code3	Measuring ranges
001	0~100KPa 0 ~ 1 Bar
002	0~200KPa 0 ~ 2 Bar
003	0~350KPa 0 ~ 3.5 Bar
007	0~700KPa 0 ~ 7 Bar
010	0~1MPa 0 ~ 10 Bar
016	0~1.6MPa 0 ~ 16 Bar
020	0~2MPa 0 ~ 20 Bar
035	0~3.5MPa 0 ~ 35 Bar
070	0~7MPa 0 ~ 70 Bar
100	0~10MPa 0 ~ 100 Bar
160	0~16MPa 0 ~ 160 Bar
200	0~20MPa 0 ~ 200 Bar
350	0~35MPa 0 ~ 350 Bar
700	0~70MPa 0 ~ 700 Bar

Code4	Electrical connection
2	M12*1
3	Cable
5	Hirschmann

Code5	Process connection
M	M20*1.5 Male
G	G1/2 Male
H	G3/8 Male
F	G1/4 Male
D	7/16~20UNF Male
I	7/16~20UNF Female
N	1/2 NPT Male
P	1/4 NPT Male

Code6	Accuracy
A	0.1%
B	0.25%

* Note: Order example: Pressure Sensor **CYMP-A-010-5F-A**